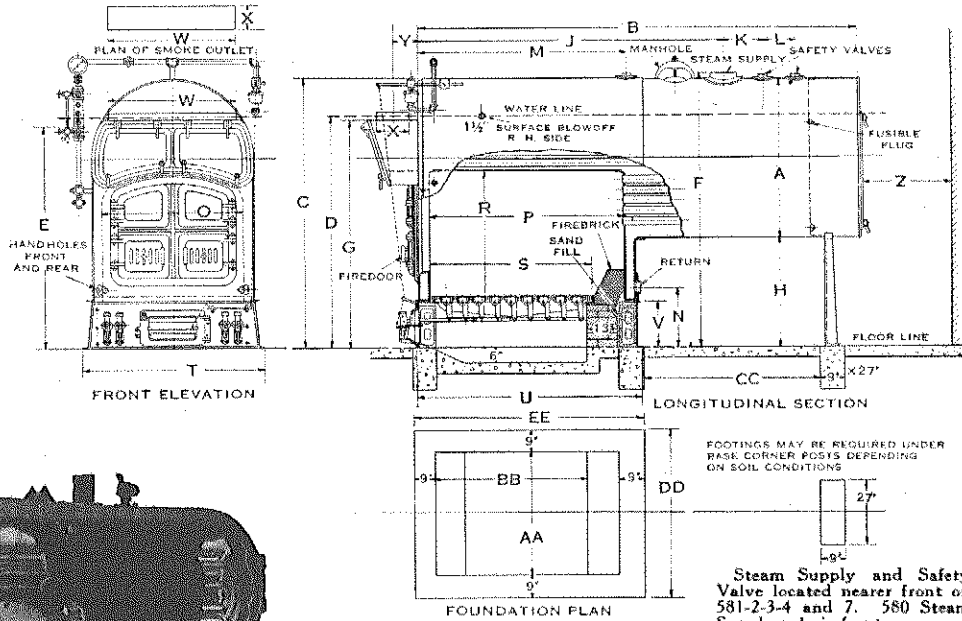
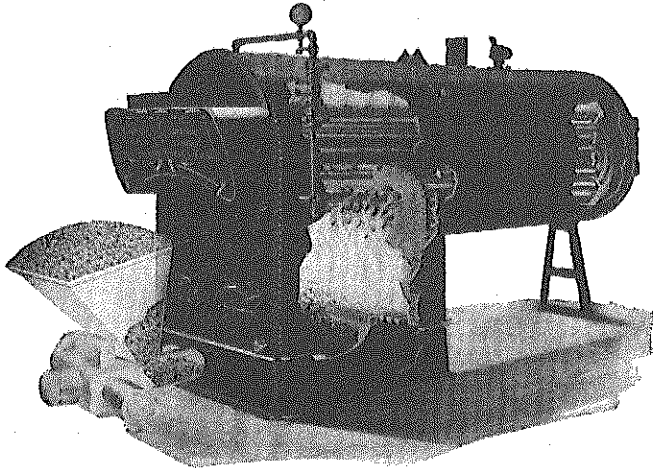


Kewanee Up-Draft Firebox Boiler

"500" Series For Coal

The high-class workmanship on Kewanee Boilers is proverbial in the Trade and in the Architectural profession. This "500" series reflects the best Kewanee practice based on generations of continuous experience.

"500" Series Riveted Up-Draft Firebox Boiler With Two-Pass Three Inch Tubes



Steam Supply and Safety Valve located nearer front on 581-2-3-4 and 7. 580 Steam Supply only in front.

"500" series conforms to the A.S.M.E. boiler code for construction 15 lbs., and for rating with the S.H.B.I. simplified practice recommendation. Also built for 100-150 lb. pressures.

Equipment—Steel base assembled with cast iron ash pit front and four cast iron corner posts; heavy rocking or dumping grates; backstand, fire and flue doors. Manhole furnished on No. 580 and larger. No fire brick furnished. Bridgewall omitted 576-581.

Firing Tools—Hoe, poker, slice bar, flue cleaner and handle.

Trimnings for Steam Only—Safety valve, steam gauge with syphon and cock, water column with water gauge, glass and cocks, damper regulator.

For Cut-away View "500" Series Hand-Fired Coal, see page 21.

Specifications and Setting Measurements

Boiler Number	576	577	578	579	580	581	582	583	584	585	586	587	588	589	590
Rating—Steam Radiation	3500	4000	4500	5000	6000	7000	8500	10000	12500	15000	17500	20000	25000	30000	35000
Water Radiation	5600	6400	7200	8000	9600	11200	13600	16000	20000	24000	28000	32000	40000	48000	56000
Btu. per Hour	840	960	1080	1200	1440	1680	2040	2400	3000	3600	4200	4800	6000	7200	8400
Heating Surface (SHBI min.)	250	286	322	358	429	500	608	715	893	1072	1250	1429	1786	2143	2500
Grate Area (SHBI min.)	11.4	12.2	13.4	14.5	16.4	18.1	20.5	22.5	25.6	28.4	30.9	33.2	37.4	41.2	44.7
Breeching Diameter	19	20	21	22	23	24	26	28	30	31	33	35	39	41	43
Stack Diameter	17	18	19	20	21	22	24	26	28	29	31	33	36	38	40
Stack Height	55	60	55	60	60	65	60	70	70	80	80	85	95	100	110
Breeching Diameter, Two Boilers	25	26	27	28	30	31	34	36	40	41	44	47	50	54	56
Stack Diameter, Two Boilers	23	24	25	26	28	29	32	34	37	38	41	44	47	50	52
Stack Height, Two Boilers	65	70	65	70	70	75	70	80	80	80	90	90	105	110	120
Steam Supply Size	6	6	6	6	8	8	8	8	8	8	8	8	10	10	10
Return Size	3	3	3	3	4	4	4	4	4	4	4	4	6	6	6
Safety Valve Size	2	2	2	2½	2½	2½	3	3	2-2	2-2½	2-2½	2-2½	2-2½	2-3	2-3
Shipping Weight	6100	6700	7300	7900	9000	10000	11500	13000	15200	17300	19300	21200	25000	28400	31700
A—Boiler Diameter	42	42	48	48	54	54	60	60	66	66	72	78	78	84	84
B—Boiler Length	8-7	9-6½	8-10	9-6½	9-2½	10-6	11-1	12-9	12-10	14-9	14-9	14-9	17-7½	17-9½	20-0½
C—Rear Height Overall	80	80	86	86	94	94	101	101	107	107	113	115	125	125	125
D—Water Line	70	70	73	73	79½	79½	84½	84½	89½	89½	94	96½	96½	105	105
E—Water Column Height	68	68	71	71	77½	77½	82½	82½	87½	87½	92	94½	94½	103	103
F—Steam Supply Height	82	82	88	88	96	96	103	103	109	109	115	117	117	127½	127½
G—Breeching Connection Height	70	70	74½	74½	81	81	86	86	89	89	96	97	97	109	109
H—Rear Stand Height	38	38	38	38	40	40	41	41	41	41	41	37	37	41	41
J—Steam Supply Location	6-0	6-6	6-0	6-6	2-6	2-6	3-0	3-0	3-0	11-0	11-0	3-0	12-4	12-4	13-0
K—Safety Valve Location	14	15	14	15	60	16	16	16	16	16	15	16	18	18	18
L—Safety Valve Location										12		12	12	12	12
M—Safety Valve Location										7-6	7-6				
N—Return Height	19	19	19	19	19½	19½	22½	22½	22½	22½	22½	22½	23½	27½	27½
O—Firebox Width	36	36	42	42	48	48	53	53	59	59	65	71	71	77	77
P—Firebox Length	50	50	50	50	50	56	72	82	82	86	86	90	102	102	108
R—Firebox Height	41½	41½	44	44	49	49	49	49	52	54½	55	55	57	57	57
S—Grate Length	50	50	50	50	50	56	61	61	67	73	73	67	79	79	85
T—Base Width	47½	47½	53½	53½	59½	59½	66	66	72	72	78	84	84	90½	90½
U—Base Length	59½	59½	60	60	60	66	83	93	97	97	101½	113½	113½	119½	119½
V—Base Height	14	14	14	14	14	14	17	17	17	17	17	17	21	21	21
W—Breeching Connection Length	32	32	34	34	40	40	44	44	51	51	54	60	60	64	64
X—Breeching Connection Width	9	9	11	11	12	12	14	14	15	15	19	18	18	22	22
Y—Breeching Connection Location	6½	6½	7½	7½	8	8	9	9	9½	9½	11½	11	11	13	13
Z—Rear Door Clearance	42	42	48	48	30	30	33	33	36	36	39	42	42	45	45
AA—Ash Pit Width	36	36	42	42	47½	47½	52½	52½	58½	58½	64	70	70	76	76
BB—Ash Pit Length	42½	42½	43	43	43	49	56	56	62	68	68	62	74	74	80
CC—Rear Stand Location	33	44	36	44	39	48	36	46	48	66	66	62	82	80	84
DD—Foundation Width	54	54	60	60	65½	65½	70½	70½	76½	76½	82	88	88	94	94
EE—Foundation Length	60½	60½	61	61	61	67	84	94	94	98	98	102½	114½	114½	120½
Number of Common Brick			No B	No B	all Req	all Req	185	185	200	200	220	240	240	315	315
Number of Fire Brick			No B	No B	all Req	all Req	48	95	80	60	68	150	150	160	160
*Outside Surface to Cover	115	125	130	140	155	170	195	225	245	280	295	310	365	400	450

*Front smokebox and front head below smokebox NOT included.